



THE PATH IS CLEAR

PUBLISHED
12-MONTH DATA

84.6%

TARGET LESION
PRIMARY PATENCY

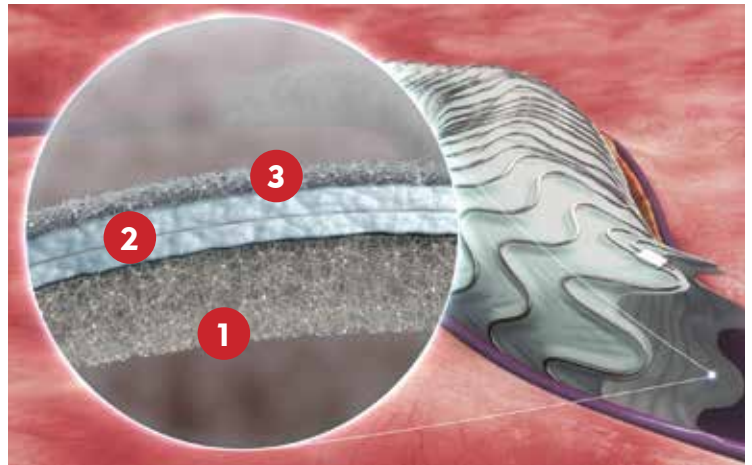


MERT WRAPSODY™
Cell-Impermeable Endoprosthesis

The **FIRST** and **ONLY** Cell-Impermeable Endoprosthesis that prevents transmural cellular migration and tissue accumulation.



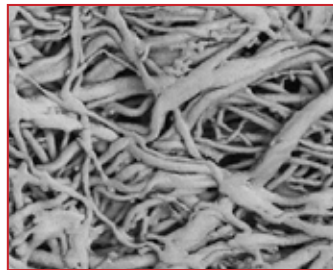
INNOVATIVE COVERING WITH TRI-LAYERED MICROSTRUCTURE DESIGNED TO MAINTAIN LONG-TERM VESSEL PATENCY



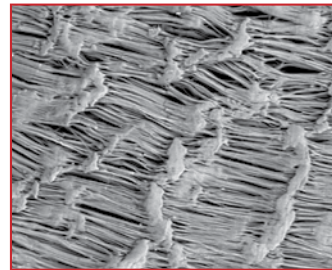
1 NOVEL-SPUN INNER GRAFT LAYER

Limits inflammation and thrombus formation without coatings or drugs.

Novel-spun PTFE microstructure of Merit WRAPSODY



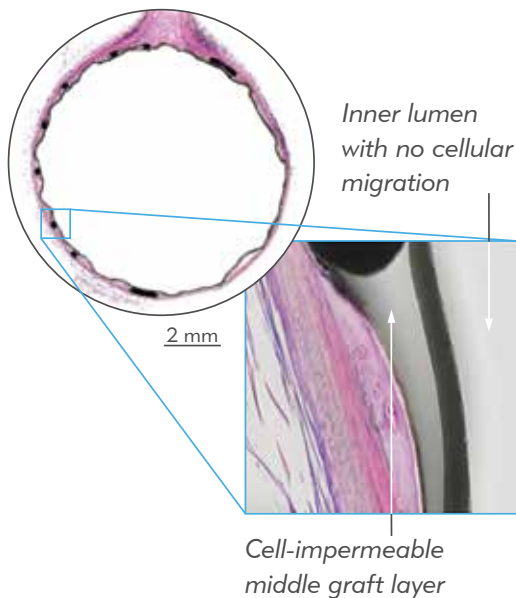
Traditional ePTFE microstructure, leading covered stent manufacturer



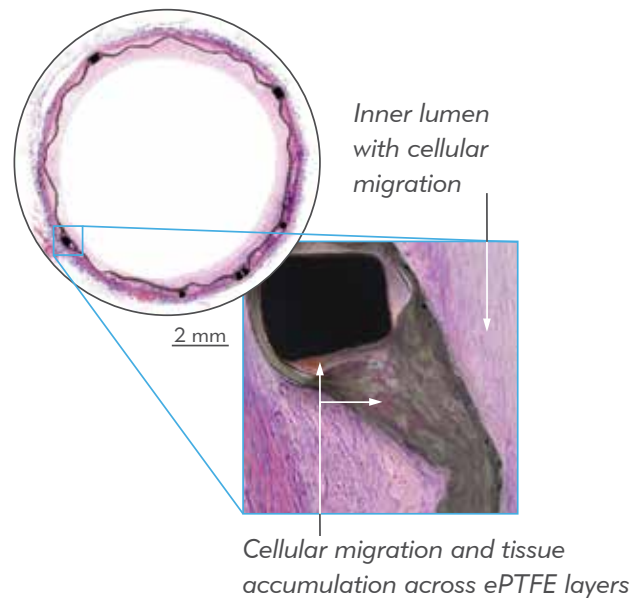
2 CELL-IMPERMEABLE MIDDLE LAYER

Prevents transmural cellular migration and tissue accumulation.

Merit WRAPSODY



Leading Covered Stent



Cross-Sectional Histology Images: Left External Iliac, Animal, 180 days¹
Dolmatch, et al. JVIR. 2020; 31: 494–502!

Evaluation of a Novel Spun Polytetrafluoroethylene Stent Graft in an Ovine External Iliac Artery Model

3 BIOCOMPATIBLE ePTFE OUTER LAYER

Allows tissue ingrowth to prevent endoprosthesis migration.



DESIGNED TO MAINTAIN LONG-TERM VESSEL PATENCY IN PATIENTS WITH OBSTRUCTIONS IN THE DIALYSIS OUTFLOW CIRCUIT.

OPTIMISED RADIAL STRENGTH AND COMPRESSION RESISTANCE

The Merit WRAPSODY has consistent radial strength and robust local compression resistance across all diameter sizes, allowing the covered stent to withstand both intraluminal forces as well as extrinsic pressures placed on the device.

LOCAL COMPRESSION DEVICE COMPARISON²



Merit WRAPSODY versus 10 mm leading covered stent, each compressed by 1.8 N.

SOFTENED END ROWS

The Merit WRAPSODY is designed with end rows that have less radial force to better conform to healthy vessel tissue, prevent vessel trauma, and improve long-term patency.

Softened End Rows with less radial force²

Nitinol Struts allow for upsizing of up to **25%** for superior vessel conformance.²



Published Clinical Data

Conclusion From the Authors³: "This degree of patency preservation should reduce revision frequency and access abandonment rates".

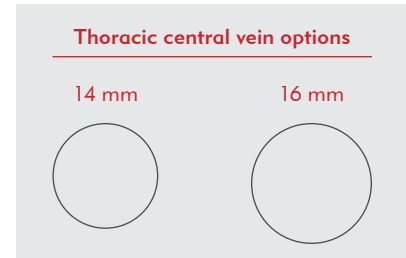
FIRST CLINICAL RESULTS OF THE MERIT WRAPSODY™ CELL-IMPERMEABLE ENDOPROSTHESIS³ [CardioVascular and Interventional Radiology \(CVIR\), 2021](#)

TARGET LESION PRIMARY PATENCY BY COHORT	
Time	Total [n/N(%)] N=46
6 Months	42/43 (97.7%)
12 Month	33/39 (84.6%)

ACCESS CIRCUIT PRIMARY PATENCY BY COHORT	
Time	Total [n/N(%)] N=46
6 Months	38/45 (84.4%)
12 Month	29/44 (65.9%)

MORE DIAMETER SIZES TO TREAT THE DIALYSIS OUTFLOW CIRCUIT

The Merit WRAPSODY is the only covered stent on the market with 14 mm and 16 mm diameter options specifically designed to treat the thoracic central veins.



MERIT WRAPSODY LENGTHS

The Merit WRAPSODY is available in lengths ranging from 30 mm to 125 mm.

6x125



16x30



ORDERING INFORMATION

Catalog Number	Catheter Working Length	Endoprosthesis Diameter	Endoprosthesis Length	French Size
WRAP-S06050	80 cm	6 mm	50 mm	8F
WRAP-S06075	80 cm	6 mm	75 mm	8F
WRAP-S06100	80 cm	6 mm	100 mm	8F
WRAP-S06125	80 cm	6 mm	125 mm	8F
WRAP-S07050	80 cm	7 mm	50 mm	9F
WRAP-S07075	80 cm	7 mm	75 mm	9F
WRAP-S07100	80 cm	7 mm	100 mm	9F
WRAP-S07125	80 cm	7 mm	125 mm	9F
WRAP-S08050	80 cm	8 mm	50 mm	9F
WRAP-S08075	80 cm	8 mm	75 mm	9F
WRAP-S08100	80 cm	8 mm	100 mm	10F
WRAP-S08125	80 cm	8 mm	125 mm	10F
WRAP-S09050	80 cm	9 mm	50 mm	10F
WRAP-S09075	80 cm	9 mm	75 mm	10F
WRAP-S09100	80 cm	9 mm	100 mm	11F
WRAP-S09125	80 cm	9 mm	125 mm	11F
WRAP-L06050	120 cm	6 mm	50 mm	8F
WRAP-L06075	120 cm	6 mm	75 mm	8F
WRAP-L06100	120 cm	6 mm	100 mm	8F
WRAP-L06125	120 cm	6 mm	125 mm	8F
WRAP-L07050	120 cm	7 mm	50 mm	9F
WRAP-L07075	120 cm	7 mm	75 mm	9F
WRAP-L07100	120 cm	7 mm	100 mm	9F
WRAP-L07125	120 cm	7 mm	125 mm	9F
WRAP-L08050	120 cm	8 mm	50 mm	9F
WRAP-L08075	120 cm	8 mm	75 mm	9F
WRAP-L08100	120 cm	8 mm	100 mm	10F
WRAP-L08125	120 cm	8 mm	125 mm	10F

Catalog Number	Catheter Working Length	Endoprosthesis Diameter	Endoprosthesis Length	French Size
WRAP-L09050	120 cm	9 mm	50 mm	10F
WRAP-L09075	120 cm	9 mm	75 mm	10F
WRAP-L09100	120 cm	9 mm	100 mm	11F
WRAP-L09125	120 cm	9 mm	125 mm	11F
WRAP-L10050	120 cm	10 mm	50 mm	11F
WRAP-L10075	120 cm	10 mm	75 mm	11F
WRAP-L10100	120 cm	10 mm	100 mm	12F
WRAP-L10125	120 cm	10 mm	125 mm	12F
WRAP-L12030	120 cm	12 mm	30 mm	12F
WRAP-L12040	120 cm	12 mm	40 mm	12F
WRAP-L12050	120 cm	12 mm	50 mm	12F
WRAP-L12060	120 cm	12 mm	60 mm	12F
WRAP-L12070	120 cm	12 mm	70 mm	12F
WRAP-L12080	120 cm	12 mm	80 mm	12F

EXCLUSIVE TO MERIT WRAPSODY

WRAP-L14030	120 cm	14 mm	30 mm	12F
WRAP-L14040	120 cm	14 mm	40 mm	12F
WRAP-L14050	120 cm	14 mm	50 mm	12F
WRAP-L14060	120 cm	14 mm	60 mm	14F
WRAP-L14070	120 cm	14 mm	70 mm	14F
WRAP-L14080	120 cm	14 mm	80 mm	14F
WRAP-L16030	120 cm	16 mm	30 mm	14F
WRAP-L16040	120 cm	16 mm	40 mm	14F
WRAP-L16050	120 cm	16 mm	50 mm	14F
WRAP-L16060	120 cm	16 mm	60 mm	14F
WRAP-L16070	120 cm	16 mm	70 mm	14F
WRAP-L16080	120 cm	16 mm	80 mm	14F

REFERENCES

- Dolmatch, Bart L., John W. Hall, Wayne L. Mower, and Serge D. Rousselle. 2020. "Evaluation of a Novel Spun Polytetrafluoroethylene Stent Graft in an Ovine External Iliac Artery Model." *Journal of Vascular and Interventional Radiology* 31: 494–502. <https://doi.org/10.1016/j.jvir.2019.07.036>.
- Data on file.
- Gilbert J, et al.; *CardioVascular and Interventional Radiology* (2021). <https://doi.org/10.1007/s00270-021-02953-8>

This product is intended for sale and/or use in haemodialysis patients for the treatment of stenosis or occlusion within the dialysis outflow circuit of an arteriovenous (AV) fistula or AV graft. This product is not approved, cleared or available for sale or use in the United States, and may not be approved, cleared or available for sale or use in other countries. Before using any product, refer to the Instructions for Use (IFU) for indications, contraindications, warnings, precautions, and directions for use.



Understand. Innovate. Deliver.™

merit.com

Merit Medical Systems, Inc.
1600 West Merit Parkway
South Jordan, Utah 84095
1.801.253.1600
1.800.35.MERIT

Merit Medical Europe, Middle East, & Africa (EMEA)
Amerikalaan 42, 6199 AE
Maastricht-Airport
The Netherlands
+31 43 358 82 22

Merit Medical Australia
53 Canterbury Road
Braeside VIC
Australia
+61 1300 696 374

Merit Medical New Zealand
4/4 Rawiri Place
Hobsonville, Auckland
New Zealand
+64 9 964 0591