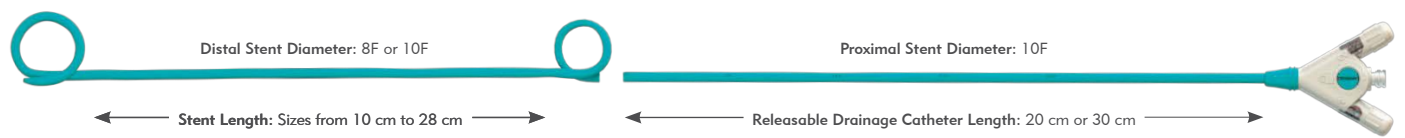
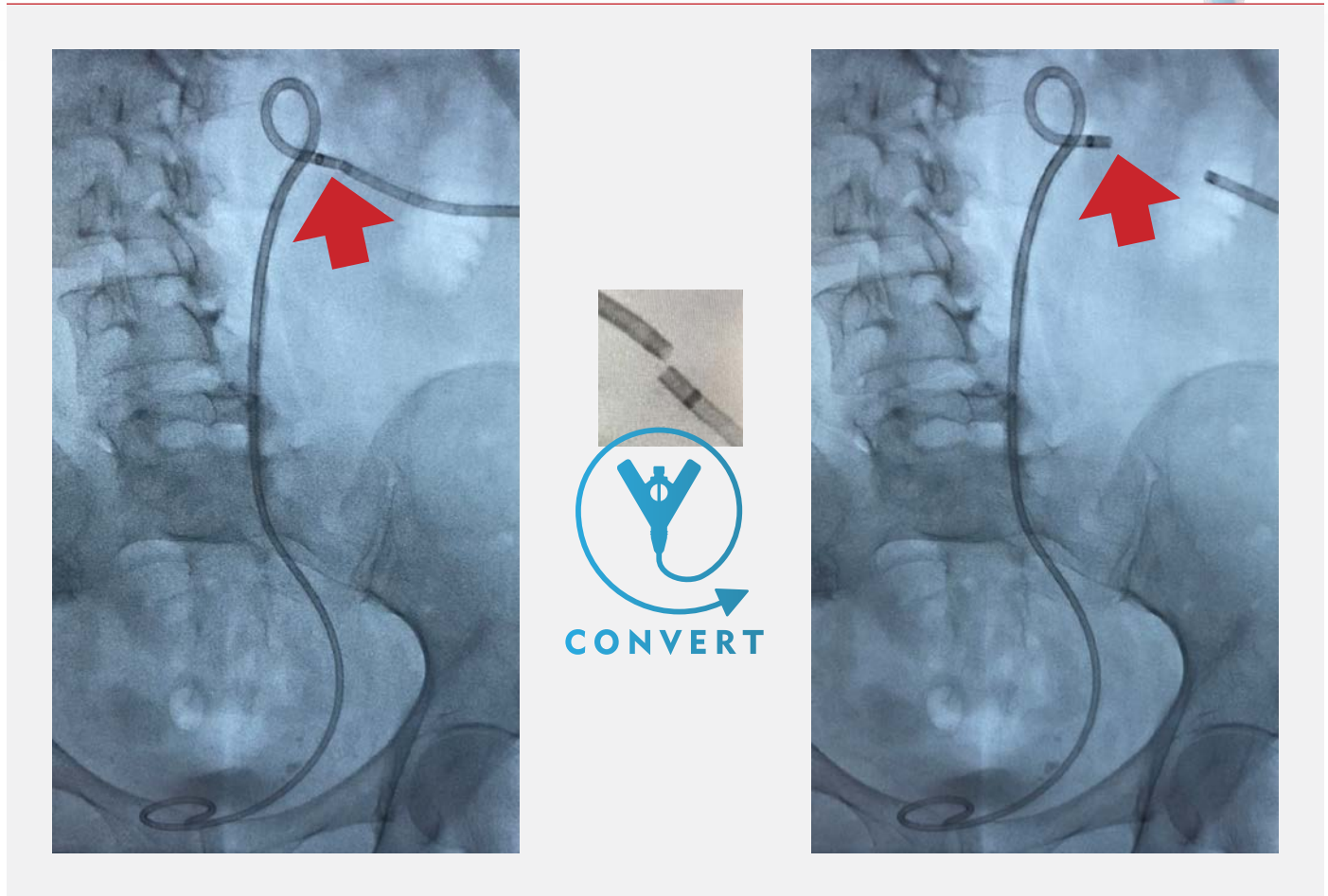


RESOLVE ConvertX[®] Nephroureteral Stent System



DRAIN TO STENT IN 30 SECONDS¹



Flexibility of Treatment: Place it like a nephroureteral drain. Convert it to a ureteral stent when you are ready.

Unique Solution

Nephroureteral drain and ureteral stent combined into one streamlined product.

Boosts Productivity

Conversion takes less than 30 seconds, and no sterile prep is required.

Enhances Patient Experience

Patient gains freedom from an external drain without the discomforts of a second invasive procedure.



Watch the video and request an evaluation at merit.com/convertx

Physician requesting evaluation:

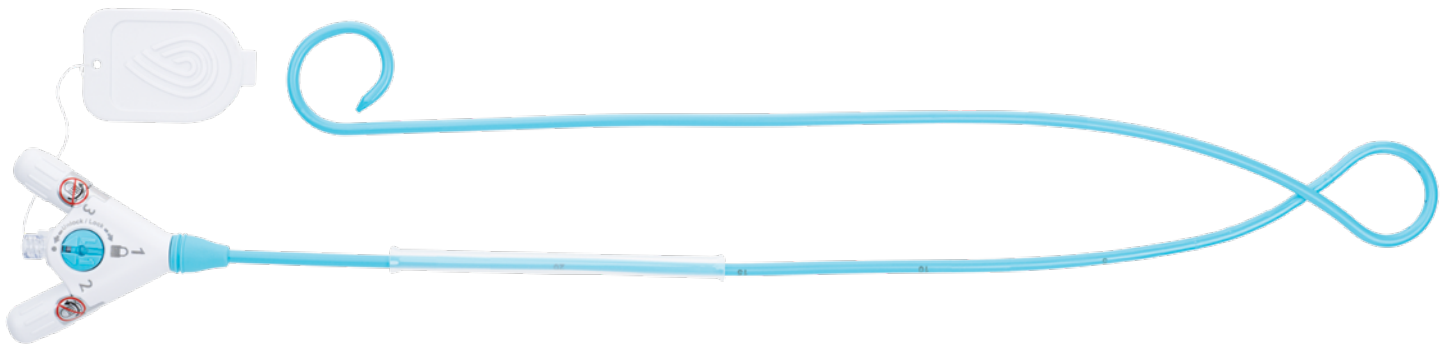
Signature: _____

Date: _____

ORDERING INFORMATION

Catalog Number	Stent Length	Distal Stent Diameter	Proximal Stent Diameter	Releasable Drainage Catheter Length
RCX10-8-038	10 cm	8.3F	10.3F	20 cm
RCX12-8-038	12 cm	8.3F	10.3F	20 cm
RCX14-8-038	14 cm	8.3F	10.3F	20 cm
RCX20-8-038	20 cm	8.3F	10.3F	30 cm
RCX22-8-038	22 cm	8.3F	10.3F	30 cm
RCX24-8-038	24 cm	8.3F	10.3F	30 cm
RCX26-8-038	26 cm	8.3F	10.3F	30 cm
RCX28-8-038	28 cm	8.3F	10.3F	30 cm
RCX10-10-038	10 cm	10.3F	10.3F	20 cm
RCX12-10-038	12 cm	10.3F	10.3F	20 cm
RCX14-10-038	14 cm	10.3F	10.3F	20 cm
RCX20-10-038	20 cm	10.3F	10.3F	30 cm
RCX22-10-038	22 cm	10.3F	10.3F	30 cm
RCX24-10-038	24 cm	10.3F	10.3F	30 cm
RCX26-10-038	26 cm	10.3F	10.3F	30 cm
RCX28-10-038	28 cm	10.3F	10.3F	30 cm

All stents are compatible with standard 0.038" (0.97 mm) guide wires.
 Packaged 1 per box



REFERENCES

1. Data on file.

Before using refer to Instructions for Use for indications, contraindications, warnings, precautions, and directions for use.



Understand. Innovate. Deliver.™

merit.com

Merit Medical Systems, Inc.
 1600 West Merit Parkway
 South Jordan, Utah 84095
 1.801.253.1600
 1.800.35.MERIT

Merit Medical Europe, Middle
 East & Africa (EMEA)
 Amerikalaan 42, 6199 AE
 Maastricht-Airport
 The Netherlands
 +31 43 358 82 22

Merit Medical Ireland Ltd.
 Parkmore Business Park West
 Galway, Ireland
 +353 (0) 91 703 733