



CARDIAC INTERVENTION

# Merit Advance<sup>®</sup>

Angiographic Needles

## THE POINT OF INNOVATION<sup>™</sup>

Begins with Merit's Angiographic Needles and ends with exceptional clinical performance



# Merit Advance®

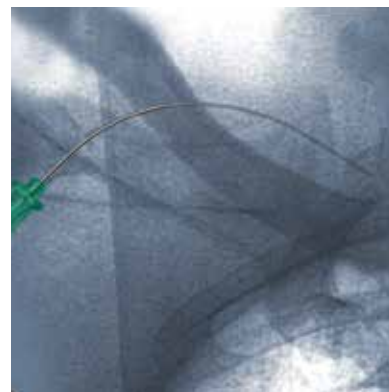
Angiographic Needles

## ADVANCING NEEDLE DESIGNS WITH THE HIGHEST STANDARDS YOU'VE COME TO EXPECT

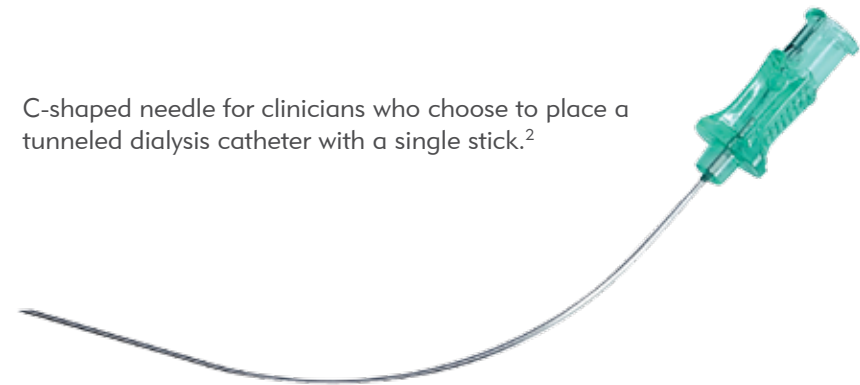
Merit Advance angiographic needles combine an ergonomic hub, coated stainless steel and tip sharpness with top clinical performance. Our Majestik® 2 and 3 part needles offered in standard, Seldinger or Courmand shields incorporate a blunt cannula with a solid or hollow cutting stylet. When clinician safety matters, choose our Advance safety needle.

### BENEFITS

- Unique hub design with ergonomic feel and reference point to orient bevel.
- Increased sharpness to facilitate entry into tissue and vessel walls.
- Designed for smooth guide wire insertion and removal of the needle over the wire.
- 18G needles have approximately 25% less drag than leading competitor.<sup>1</sup>



C-shaped needle for clinicians who choose to place a tunneled dialysis catheter with a single stick.<sup>2</sup>



### Merit Advance® Angiographic Needle

Ergonomic hub with reference point to orient bevel. Smooth guide wire insertion and removal over the wire.



### MajeSTIK® Angiographic Needle

Sharp grind angle facilitates entry into tissue and vessel wall. Blunt-end obturator occludes the cannula lumen.



### Merit Advance® Angiographic Safety Needle

Easy-to-activate, low-profile safety mechanism shields the needle bevel after use for needlestick prevention.



<sup>1</sup> Data on file.

<sup>2</sup> Contractor SG, Phatak TD, Bhagat N. DeNovo Placement of a Tunneled Dialysis Catheter over a wire with the single-incision technique. J Vasc Interv Radiol 2008; 19:1255-1259.

ORDERING INFORMATION

# Merit Advance®

Angiographic Needles

Product Number	Gauge	Wall Thickness	Accepts Wire	Length CM	Length Inch	Finish
<b>ONE-WALL NEEDLE: COLORED HUB</b>						
AD18T51W	18	Thin	.038" (0.97mm)	5.0	2"	Smooth
AD18T71W	18	Thin	.038" (0.97mm)	7.0	2¾"	Smooth
AD18T71W-E	18	Thin	.038" (0.97mm)	7.0	2¾"	Echo
AD18N91W	18	Normal	.038" (0.97mm)	9.0	3½"	Smooth
AD19U41W	19	Ultra	.035" (0.89mm)	4.0	1½"	Smooth
AD19U51W	19	Ultra	.035" (0.89mm)	5.0	2"	Smooth
AD19U71W	19	Ultra	.035" (0.89mm)	7.0	2¾"	Smooth
AD20T41W	20	Thin	.025" (0.64mm)	4.0	1½"	Smooth
AD20T71W	20	Thin	.025" (0.64mm)	7.0	2¾"	Smooth
AD21T21W	21	Thin	.021" (0.53mm)	2.0	1"	Smooth
AD21T41W	21	Thin	.021" (0.53mm)	4.0	1½"	Smooth
AD21T41W-E	21	Thin	.021" (0.53mm)	4.0	1½"	Echo
AD21T71W	21	Thin	.021" (0.53mm)	7.0	2¾"	Smooth
AD21T71W-E	21	Thin	.021" (0.53mm)	7.0	2¾"	Echo
AD21T91W	21	Thin	.021" (0.53mm)	9.0	3½"	Smooth
AD21T91W-E	21	Thin	.021" (0.53mm)	9.0	3½"	Echo

**ONE-WALL NEEDLE: CLEAR HUB**

AD21T21WT	21	Thin	.021" (0.53 mm)	2.5	1"	Smooth
AD21T41WT	21	Thin	.021" (0.53 mm)	4.0	1 ½"	Smooth
AD21T41WT-E	21	Thin	.021" (0.53 mm)	4.0	1 ½"	Echo
AD21T71WT	21	Thin	.021" (0.53 mm)	7.0	2 ¾"	Smooth
AD21T71WT-E	21	Thin	.021" (0.53 mm)	7.0	2 ¾"	Echo
AD18T71WT	18	Thin	.038" (0.97mm)	7.0	2¾"	Smooth
AD21T91WT	21	Thin	.021" (0.53 mm)	9.0	3 ½"	Smooth
AD21T91WT-E	21	Thin	.021" (0.53 mm)	9.0	3 ½"	Echo

**ONE-WALL NEEDLE WITH SELDINGER SHIELD**

AD18T51WS	18	Thin	.038" (0.97mm)	5.0	2"	Smooth
AD18T71WS	18	Thin	.038" (0.97mm)	7.0	2¾"	Smooth
AD19U71WS	19	Ultra	.035" (0.89mm)	7.0	2¾"	Smooth

**ONE-WALL NEEDLE WITH COURNAUD SHIELD**

AD18T71WC	18	Thin	.038" (0.97mm)	7.0	2¾"	Smooth
AD19U41WC	19	ultra	.035" (0.89mm)	4.0	1½"	Smooth
AD19U71WC	19	ultra	.035" (0.89mm)	7.0	2¾"	Smooth
AD21T41WC	21	Thin	.021" (0.53mm)	4.0	1½"	Smooth

**CURVED ONE-WALL NEEDLE**

AD21T91R*	21	Thin	.021" (0.53mm)	9.0	3½"	Smooth
AD21T91RE*	21	Thin	.021" (0.53mm)	9.0	3½"	Echo

All needles are packaged 25 per box (4 boxes per case).

\* Curved needles are packaged 10 per box.

# MajeSTIK®

Angiographic Needles

Product Number	Gauge	Wall Thickness	Accepts Wire	Length CM	Length Inch	# of Parts
<b>COURNAUD STYLE NEEDLE</b>						
AN18T52C	18	Thin	.038" (0.97mm)	5.1	2"	2
AN18T53CO	18	Thin	.038" (0.97mm)	5.1	2"	3
<b>MODIFIED COURNAUD STYLE NEEDLE</b>						
AN18T53MCO	18	Thin	.038" (0.97mm)	5.1	2"	3
AN18T52MC	18	Thin	.038" (0.97mm)	5.1	2"	2
AN18T72MC	18	Thin	.038" (0.97mm)	7.0	2¾"	2
AN19U52MC	19	Ultra	.035" (0.89mm)	5.1	2"	2
<b>SELDINGER STYLE NEEDLE</b>						
AN18T73SO	18	Thin	.038" (0.97mm)	7.0	2¾"	3
AN18T72S-25	18	Thin	.038" (0.97mm)	7.0	2¾"	2
AN19U72S-25	19	Ultra	.035" (0.89mm)	7.0	2¾"	2
<b>SELDINGER NEEDLE WITH HOLLOW STYLET</b>						
AN18T53SHO	18	Thin	.038" (0.97mm)	5.1	2"	3
AN18T73SHO	18	Thin	.038" (0.97mm)	7.0	2¾"	3
AN18T72SH	18	Thin	.038" (0.97mm)	7.0	2¾"	2
<b>SELDINGER STYLE NEEDLE WITH COURNAUD SHIELD</b>						
AN18T72SC	18	Thin	.038" (0.97mm)	7.0	2¾"	2

Packaged 25 per box (4 boxes per case).

# Merit Advance®

Angiographic Safety Needle

Product Number	Gauge	Wings	Accepts Wire	Length CM	Length Inch
SL18T71W	18	no	0.038" (0.97mm)	7.0	2¾"
SL18T71WS	18	yes	0.038" (0.97mm)	7.0	2¾"
SL21T71W	21	no	0.021" (0.53mm)	7.0	2¾"
SL21T71WS	21	yes	0.021" (0.53mm)	7.0	2¾"

Packaged 25 per box (4 boxes per case).



Understand. Innovate. Deliver.™

Merit Medical Systems, Inc.  
1600 West Merit Parkway  
South Jordan, Utah 84095  
1.801.208.4300  
1.800.35.MERIT

Merit Medical Europe, Middle East, & Africa (EMEA)  
Amerikalaan 42, 6199 AE Maastricht-Airport  
The Netherlands  
+31 43 358 82 22

Merit Medical Ireland Ltd.  
Parkmore Business Park West  
Galway, Ireland  
+353 (0) 91 703 733

Merit.com

Austria  
0800 295 374

Belgium  
0800 72 906 (Dutch)  
0800 73 172 (Français)

Denmark  
80 88 00 24

Finland  
0800 770 586

France  
0800 91 60 30

Germany  
0800 182 0871

Ireland (Republic)  
1800 553 163

Italy  
800 897 005

Luxembourg  
8002 25 22

Netherlands  
0800 022 81 84

Norway  
800 11629

Portugal  
308 801 034

Russia  
+7 495 221 89 02

Spain  
+34 91 1238406

Sweden  
020 792 445

Switzerland  
(Deutsch)  
+41 225180252  
(Français)  
+41 225948000  
(Italiano)  
+41 225180035  
UK  
0800 973 115