

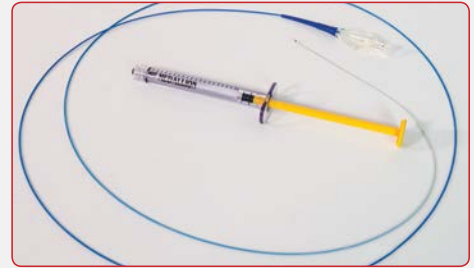
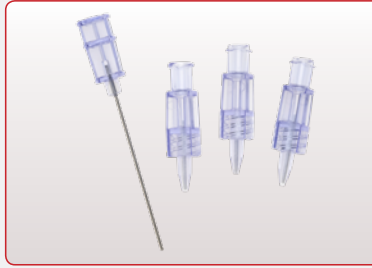
EACH TORPEDO POUCH CONTAINS:

- Three (3) Torpedo cartridges
- One (1) blunt stylet

OTHER ITEMS REQUIRED

(not provided):

- 1 mL or 3 mL delivery syringe filled with 50:50 contrast/saline sterile mixture
- Delivery Catheter



THE TORPEDO CAN BE DEPLOYED WITH OR WITHOUT THE USE OF THE BLUNT STYLET.

OPTION 1: Torpedo Delivery Without The Blunt Stylet



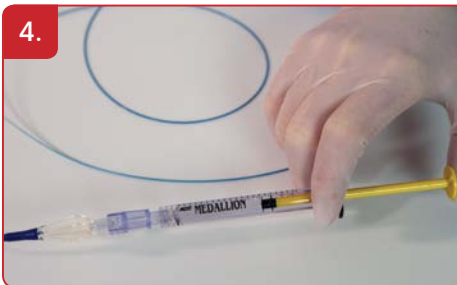
Attach the Torpedo to a 1 mL or 3 mL injection syringe filled with 50:50 contrast/saline sterile mixture. **Precaution: Only one (1) Torpedo should be delivered at a time. Delivering more than one (1) Torpedo at a time may result in non-targeted embolization.**



With the injection syringe positioned upright so that the Torpedo tip is pointing up, gently and slowly depress the plunger to remove air. Keep depressing the plunger until 2-5 drops of the contrast/saline sterile mixture comes out of the Torpedo tip.



Make an air-free connection between the Torpedo and the hub of the delivery catheter that is positioned in the vasculature for embolization.



Firmly depress the plunger on the injection syringe to deploy the Torpedo through the catheter and into the vasculature, observing the delivery of the Torpedo under fluoroscopy. If the Torpedo does not exit after depleting the entire volume of fluid in the syringe, refill the injection syringe with 50:50 contrast/saline sterile mixture and continue to deliver fluid until the Torpedo exits the catheter.

5. If further embolization is desired, repeat steps 1-4.

6. Discard any empty or unused Torpedo cartridges and the blunt stylet.

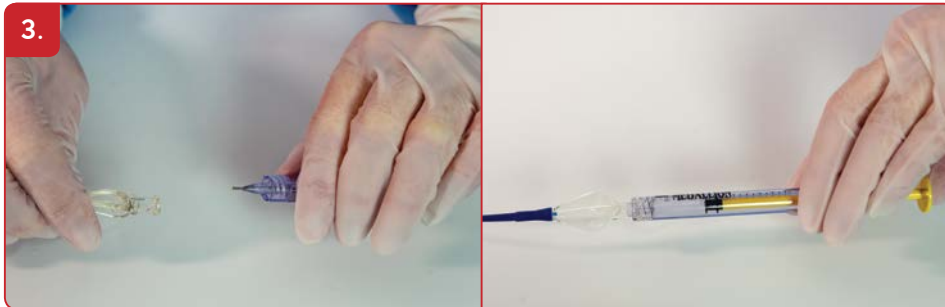
OPTION 2: Torpedo Delivery With Blunt Stylet



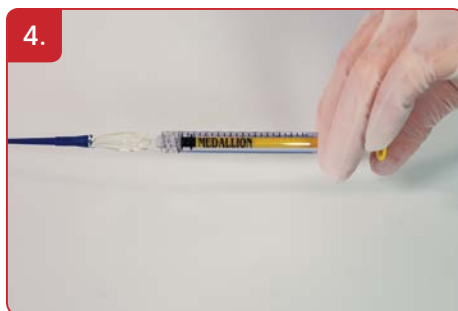
Attach the Torpedo to the hub of the delivery catheter that is positioned in the vasculature for embolization. **Precaution: Only one (1) Torpedo should be delivered at a time. Delivering more than one (1) Torpedo at a time may result in non-targeted embolization.**



Using the blunt stylet, slowly push the gelatin foam Torpedo out of the cartridge and into the delivery catheter.



Remove the empty Torpedo cartridge (with the blunt stylet still attached) from the catheter hub and attach a 1 mL or 3 mL injection syringe filled with 50:50 contrast/saline sterile mixture to the hub of the delivery catheter.



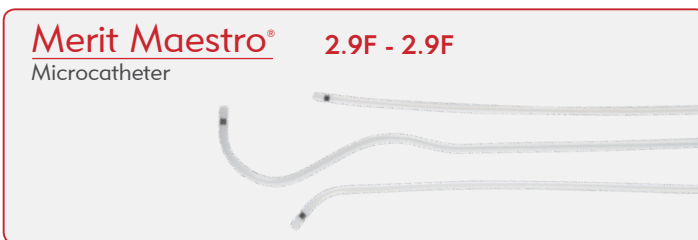
Firmly depress the plunger on the injection syringe to deploy the Torpedo through the catheter and into the vasculature, observing the delivery of the Torpedo under fluoroscopy. If the Torpedo does not exit after depleting the entire volume of fluid in the syringe, refill the injection syringe with 50:50 contrast/saline sterile mixture and continue to deliver fluid until the Torpedo exits the catheter.

5. If further embolization is desired, repeat steps 1-4.

6. Discard any empty or unused Torpedo cartridges and the blunt stylet.

DELIVERY

Merit's 2.5 mm Torpedo can be delivered through a microcatheter with a ≥ 0.027 " inner diameter, including Merit Medical's:



Merit's 5 mm Torpedo can be delivered through a catheter with a ≥ 0.040 " inner diameter.

PRODUCT ORDERING INFORMATION

Part Number	Hydrated Diameter	Length	Recommended Injection Syringe	Minimum Catheter ID	Label Color
TOR2510	2.5 mm	10 mm	1 mL	0.027" (0.68 mm)	Yellow
TOR2520	2.5 mm	20 mm	1 mL	0.027" (0.68 mm)	Yellow
TOR5010	5 mm	10 mm	3 mL	0.040" (1.02 mm)	Purple
TOR5020	5 mm	20 mm	3 mL	0.040" (1.02 mm)	Purple

Before using refer to Instructions for Use for indications, contraindications, warnings, precautions, and directions for use.



Understand. Innovate. Deliver.™

merit.com

Merit Medical Systems, Inc.
1600 West Merit Parkway
South Jordan, Utah 84095
1.801.253.1600
1.800.35.MERIT

Merit Medical Europe, Middle East, & Africa (EMEA)
Amerikalaan 42, 6199 AE
Maastricht-Airport
The Netherlands
+31 43 358 82 22

Merit Medical Ireland Ltd.
Parkmore Business Park West
Galway, Ireland
+353 (0) 91 703 733