

RADIAL APPROACH™

IT'S TIME FOR OPTIONS™



From access to closure, Merit Medical offers a complete portfolio of products for the radial approach.



VASCULAR ACCESS



GUIDE WIRES



DIAGNOSTIC CATHETERS



GUIDING CATHETERS



HEMOSTASIS

RADIAL APPROACH™



*Merit Medical recognizes that radial access is becoming an increasingly attractive option in diagnostic and interventional cardiology. The radial approach can offer greater **patient comfort, safer access, shorter procedure times, fewer complications, and earlier ambulation, which can help to reduce cost and increase efficiency.***

To meet the growing demand for radial access, Merit Medical has developed a comprehensive line of products designed to help you achieve the improved outcomes you expect from the radial approach. Our radial sheaths, guide wires, diagnostic and guiding catheters offer consistent, reliable performance. Combined with several products for hemostasis, and the ability to customize your procedural packs and trays, Merit Medical offers several options for the radial approach.

VASCULAR ACCESS

A Great Introduction

Prelude® radial sheath introducers provide **excellent transitions to facilitate smooth insertion into the patient.** The micro guide wire and Merit Advance® needle assist in atraumatic entry into the delicate radial vasculature, enhancing access for both the patient and clinician. Merit Medical offers the Prelude radial sheath in several configurations to meet your radial access needs.

The image displays the components of the Prelude Radial Sheath Introducer Kit against a blue background with wavy patterns. The kit includes a clear plastic sheath with a red stopcock at the bottom, a clear plastic needle with a red handle, a clear plastic micro guide wire with a red handle, and a clear plastic introducer with a green stopcock. The components are arranged in a way that shows their relative positions and how they fit together.

Prelude®
Radial Sheath
INTRODUCER KIT

*Smooth Transition
from Sheath
to Dilator*



*Ultra Sharp
Coated Needle
Cannula*



*SS/SS and
NT/PT
Guide Wires*



Catalog Number	French Size	Length cm	Guide Wire Diameter	Guide Wire Length	Guide Wire Core/Tip	Needle Gauge/Length
PSI-4F-7-018	4F	7	0.018" (0.46 mm)	40 cm	SS/SS	21G x 4 cm
PSI-5F-7-018	5F	7	0.018" (0.46 mm)	40 cm	SS/SS	21G x 4 cm
PSI-6F-7-018	6F	7	0.018" (0.46 mm)	40 cm	SS/SS	21G x 4 cm
PSI-4F-7-018NT4	4F	7	0.018" (0.46 mm)	40 cm	NT/PT	21G x 4 cm
PSI-5F-7-018NT4	5F	7	0.018" (0.46 mm)	40 cm	NT/PT	21G x 4 cm
PSI-6F-7-018NT4	6F	7	0.018" (0.46 mm)	40 cm	NT/PT	21G x 4 cm
PSI-4F-11-018	4F	11	0.018" (0.46 mm)	40 cm	SS/SS	21G x 4 cm
PSI-5F-11-018	5F	11	0.018" (0.46 mm)	40 cm	SS/SS	21G x 4 cm
PSI-6F-11-018	6F	11	0.018" (0.46 mm)	40 cm	SS/SS	21G x 4 cm
PSI-4F-11-018NT4	4F	11	0.018" (0.46 mm)	40 cm	NT/PT	21G x 4 cm
PSI-5F-11-018NT4	5F	11	0.018" (0.46 mm)	40 cm	NT/PT	21G x 4 cm
PSI-6F-11-018NT4	6F	11	0.018" (0.46 mm)	40 cm	NT/PT	21G x 4 cm
PSI-4F-23-018NT4	4F	23	0.018" (0.46 mm)	80 cm	NT/PT	21G x 4 cm
PSI-5F-23-018NT4	5F	23	0.018" (0.46 mm)	80 cm	NT/PT	21G x 4 cm
PSI-6F-23-018NT4	6F	23	0.018" (0.46 mm)	80 cm	NT/PT	21G x 4 cm
PSI-4F-7-025	4F	7	0.025" (0.64 mm)	50 cm	*	20G x 4 cm
PSI-5F-7-025	5F	7	0.025" (0.64 mm)	50 cm	*	20G x 4 cm
PSI-6F-7-025	6F	7	0.025" (0.64 mm)	50 cm	*	20G x 4 cm
PSI-4F-11-025	4F	11	0.025" (0.64 mm)	50 cm	*	20G x 4 cm
PSI-5F-11-025	5F	11	0.025" (0.64 mm)	50 cm	*	20G x 4 cm
PSI-6F-11-025	6F	11	0.025" (0.64 mm)	50 cm	*	20G x 4 cm

Box quantity 5

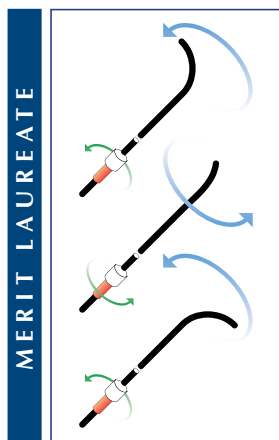
SS= Stainless Steel NT= Nitinol PT = Platinum Tip *Stainless steel, double ended (3mm J and Floppy)

GUIDE WIRES

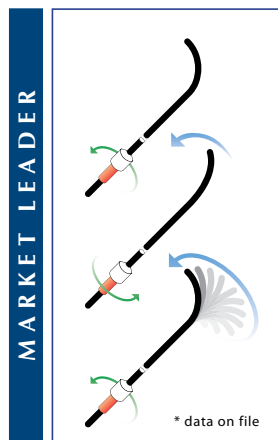
Quality and Performance Options

The Merit Laureate® hydrophilic guide wire **lubricious coating provides smooth wire movement through the vasculature and aids catheter placement into the desired anatomy.**

The guide wire atraumatic tip assists with insertion and passage through tortuous vessels and rapid selective vessel cannulation. Our wide variety of wire configurations can help you navigate the most challenging anatomy.



The Merit Laureate shows definitive turn for turn responsiveness (1:1 torque)



The market leader shows a slow torque response followed by rapid exaggerated movement.

Merit Laureate®
Hydrophilic Guide Wire



InQwire®
PTFE-Coated
Guide Wires

Ringmaster™
Guide Wire Basin

Merit Laureate®
Hydrophilic
Guide Wires

SeaDragon™
Torque Device

H2O Torq™ Device



Merit Laureate® Hydrophilic Guide Wires

Catalog Number	Description	Size	Length cm
LWSTDA35150	Std/Angled	0.035" (0.89mm)	150
LWSTDA35180	Std/Angled	0.035" (0.89mm)	180
LWSTDA35220	Std/Angled	0.035" (0.89mm)	220
LWSTDA35260EX	Std/Angled	0.035" (0.89mm)	260
LWSTDS35180	Std/Straight	0.035" (0.89mm)	180
LWSTDS35260EX	Std/Straight	0.035" (0.89mm)	260
LWSTFA35150	Stiff/Angled	0.035" (0.89mm)	150
LWSTFA35180	Stiff/Angled	0.035" (0.89mm)	180
LWSTFA35260EX	Stiff/Angled	0.035" (0.89mm)	260
LWSTFS35180	Stiff/Straight	0.035" (0.89mm)	180
LWSTFS35260EX	Stiff/Straight	0.035" (0.89mm)	260
LWSTDA38180	Std/Angled	0.038" (0.97mm)	180
LWSTDA38260EX	Std/Angled	0.038" (0.97mm)	260
LWSTDS38150	Std/Straight	0.038" (0.89mm)	150
LWSTDS38180	Std/Straight	0.038" (0.89mm)	180
LWSTDS38260EX	Std/Straight	0.038" (0.89mm)	260
LWSTFA38150	Stiff/Angled	0.038" (0.97mm)	150
LWSTFA38180	Stiff/Angled	0.038" (0.97mm)	180
LWSTFS38150	Stiff/Straight	0.038" (0.97mm)	150
LWSTFS38180	Stiff/Straight	0.038" (0.97mm)	180

InQwire® PTFE-Coated Guide Wires

IQ35F180J3	3 mm J Tip	0.035" (0.89 mm)	180
IQ35F210J3	3 mm J Tip	0.035" (0.89 mm)	210
IQ35F260J3	3 mm J Tip	0.035" (0.89 mm)	260
IQ38F260J3	3 mm J Tip	0.038" (0.97 mm)	260
IQ35F180BST	Bentson ST	0.035" (0.89 mm)	180
IQ35F260S	Straight	0.035" (0.89 mm)	260
IQ35F180J1O5	1.5 mm J	0.035" (0.89 mm)	180
IQ35F180J1O5RS	1.5 mm J	0.035" (0.89 mm)	180
IQ35F260J1O5	1.5 mm J	0.035" (0.89 mm)	260

Merit H2O™ Hydrophilic Guide Wires

Catalog Number	Description	Size	Length cm
H2OSTDA35150	Std/Angled	0.035" (0.89mm)	150
H2OSTDA35180	Std/Angled	0.035" (0.89mm)	180
H2OSTDA35260EX	Std/Angled	0.035" (0.89mm)	260
H2OSTFA35150	Stiff/Angled	0.035" (0.89mm)	150
H2OSTFA35180	Stiff/Angled	0.035" (0.89mm)	180
H2OSTFA35260EX	Stiff/Angled	0.035" (0.89mm)	260
H2OSTFS35180	Stiff/Straight	0.035" (0.89mm)	180
H2OSTFS35260EX	Stiff/Straight	0.035" (0.89mm)	260
H2OSTDA18150	Std/Angled	0.018" (0.46mm)	150
H2OSTDA18180	Std/Angled	0.018" (0.46mm)	180
H2OSTDA18260EX	Std/Angled	0.018" (0.46mm)	260
H2OSTDA25150	Std/Angled	0.025" (0.64mm)	150
H2OSTDA25180	Std/Angled	0.025" (0.64mm)	180
H2OSTDA25260EX	Std/Angled	0.025" (0.64mm)	260
H2OSTDS25180	Std/Straight	0.025" (0.64mm)	180

Torque Devices

Catalog Number	Description	Fits Wire
TD500	SeaDragon	0.018"(0.46 mm) - 0.038"(0.97 mm)
TD100	H2O Torq	0.025"(0.64 mm) - 0.040"(1.02 mm)
TD200	H2O Torq	0.010"(0.25 mm) - 0.020"(0.51 mm)

Merit Medical is a global company. Not all goods in this brochure are available in every country. Terms and conditions may vary. Contact your local sales representative for more details.

DIAGNOSTIC CATHETERS

*An Ideal Combination of
Torque, Push, and Flow*

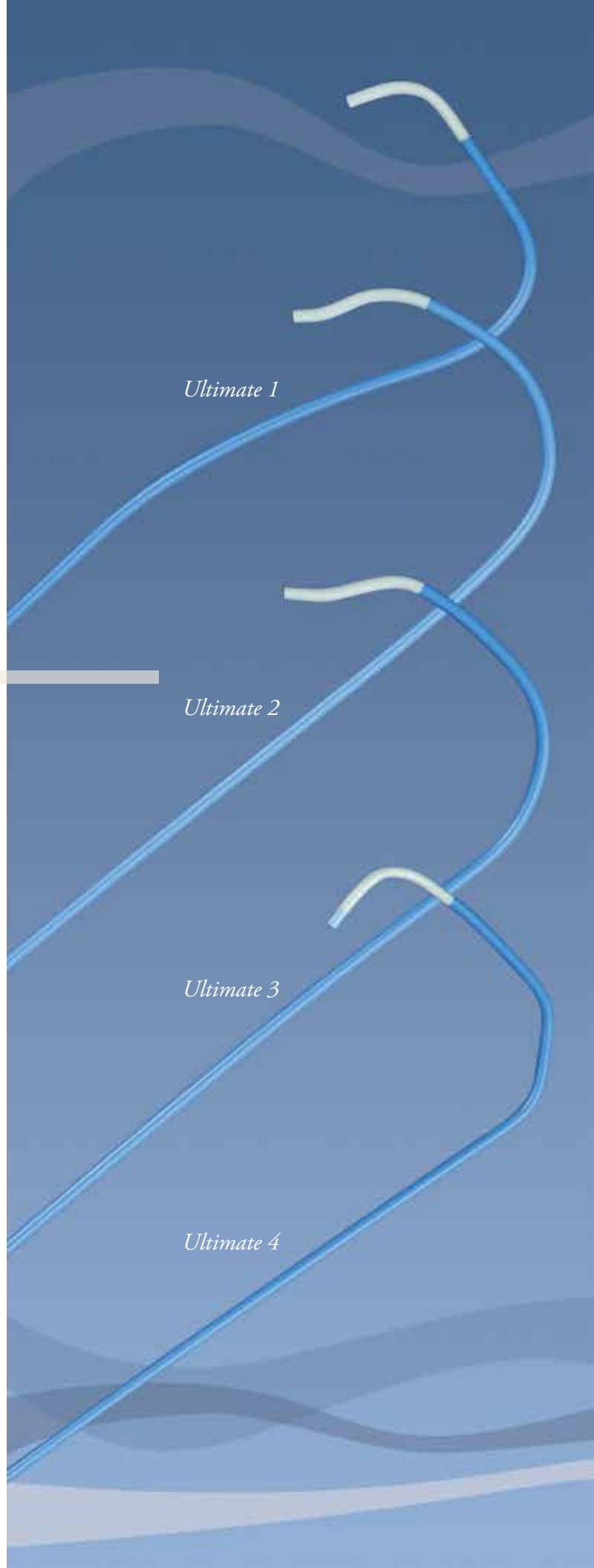
Performa Ultimate™ catheters are specially designed for bilateral coronary cannulation via radial access **potentially minimizing catheter exchanges**. These catheters have an ideal combination of torqueability and pushability to provide catheter placement for contrast delivery.

Ultimate 1

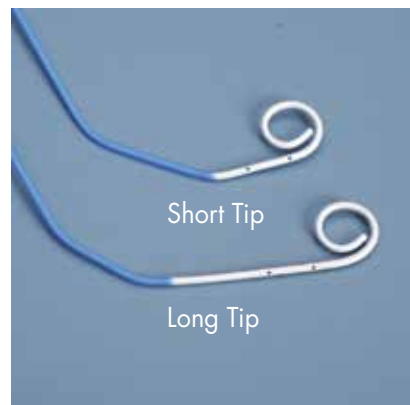
Ultimate 2

Ultimate 3

Ultimate 4



Catalog Number	Description	French Size	Length cm	Curve Length	Side Holes
410038ULT1	Ultimate 1	4F	100	3.5 cm	
4100381ULT1	Ultimate 1	4F	100	3.5 cm	1
510038ULT1	Ultimate 1	5F	100	3.5 cm	
5100381ULT1	Ultimate 1	5F	100	3.5 cm	1
610038ULT1	Ultimate 1	6F	100	3.5 cm	
6100381ULT1	Ultimate 1	6F	100	3.5 cm	1
410038ULT2	Ultimate 2	4F	100	3.5 cm	
4100381ULT2	Ultimate 2	4F	100	3.5 cm	1
510038ULT2	Ultimate 2	5F	100	3.5 cm	
5100381ULT2	Ultimate 2	5F	100	3.5 cm	1
610038ULT2	Ultimate 2	6F	100	3.5 cm	
6100381ULT2	Ultimate 2	6F	100	3.5 cm	1
410038ULT3	Ultimate 3	4F	100	4.0 cm	
4100382ULT3	Ultimate 3	4F	100	4.0 cm	2
510038ULT3	Ultimate 3	5F	100	4.0 cm	
5100382ULT3	Ultimate 3	5F	100	4.0 cm	2
610038ULT3	Ultimate 3	6F	100	4.0 cm	
6100382ULT3	Ultimate 3	6F	100	4.0 cm	2



MIV Radial Ventriculogram Catheters

410038ULT4-T40	Ultimate 4 T-40	4F	100	4.0 cm	
4100381ULT4-T40	Ultimate 4 T-40	4F	100	4.0 cm	1
510038ULT4-T40	Ultimate 4 T-40	5F	100	4.0 cm	
5100381ULT4-T40	Ultimate 4 T-40	5F	100	4.0 cm	1
610038ULT4-T40	Ultimate 4 T-40	6F	100	4.0 cm	
6100381ULT4-T40	Ultimate 4 T-40	6F	100	4.0 cm	1
410038ULT4-T45	Ultimate 4 T-45	4F	100	4.5 cm	
4100381ULT4-T45	Ultimate 4 T-45	4F	100	4.5 cm	1
510038ULT4-T45	Ultimate 4 T-45	5F	100	4.5 cm	
5100381ULT4-T45	Ultimate 4 T-45	5F	100	4.5 cm	1
610038ULT4-T45	Ultimate 4 T-45	6F	100	4.5 cm	
6100381ULT4-T45	Ultimate 4 T-45	6F	100	4.5 cm	1

All catheters accept an 0.038" (0.97 mm) guide wire



Ultimate 2 shape specifically designed for right and left coronary artery cannulation.

Catalog Number	Description	French Size	Length cm	Curve Length	Side Holes
BRAIDED					
4RPS110	Radial Pigtail Short Tip	4F	110	2.0 cm	6
4RPS125	Radial Pigtail Short Tip	4F	125	2.0 cm	6
4RPL110	Radial Pigtail Long Tip	4F	110	4.0 cm	6
4RPL125	Radial Pigtail Long Tip	4F	125	4.0 cm	6
5RPS110	Radial Pigtail Short Tip	5F	110	2.0 cm	6
5RPS125	Radial Pigtail Short Tip	5F	125	2.0 cm	6
5RPL110	Radial Pigtail Long Tip	5F	110	4.0 cm	6
5RPL125	Radial Pigtail Long Tip	5F	125	4.0 cm	6
6RPS110	Radial Pigtail Short Tip	6F	110	2.0 cm	6
6RPS125	Radial Pigtail Short Tip	6F	125	2.0 cm	6
6RPL110	Radial Pigtail Long Tip	6F	110	4.0 cm	6
6RPL125	Radial Pigtail Long Tip	6F	125	4.0 cm	6

NON-BRAIDED

4RPS110-NB	Radial Pigtail Short Tip	4F	110	2.0 cm	6
4RPS125-NB	Radial Pigtail Short Tip	4F	125	2.0 cm	6
4RPL110-NB	Radial Pigtail Long Tip	4F	110	4.0 cm	6
4RPL125-NB	Radial Pigtail Long Tip	4F	125	4.0 cm	6
5RPS110-NB	Radial Pigtail Short Tip	5F	110	2.0 cm	6
5RPS125-NB	Radial Pigtail Short Tip	5F	125	2.0 cm	6
5RPL110-NB	Radial Pigtail Long Tip	5F	110	4.0 cm	6
5RPL125-NB	Radial Pigtail Long Tip	5F	125	4.0 cm	6
6RPS110-NB	Radial Pigtail Short Tip	6F	110	2.0 cm	6
6RPS125-NB	Radial Pigtail Short Tip	6F	125	2.0 cm	6
6RPL110-NB	Radial Pigtail Long Tip	6F	110	4.0 cm	6
6RPL125-NB	Radial Pigtail Long Tip	6F	125	4.0 cm	6

All catheters accept an 0.038" (0.97 mm) guide wire

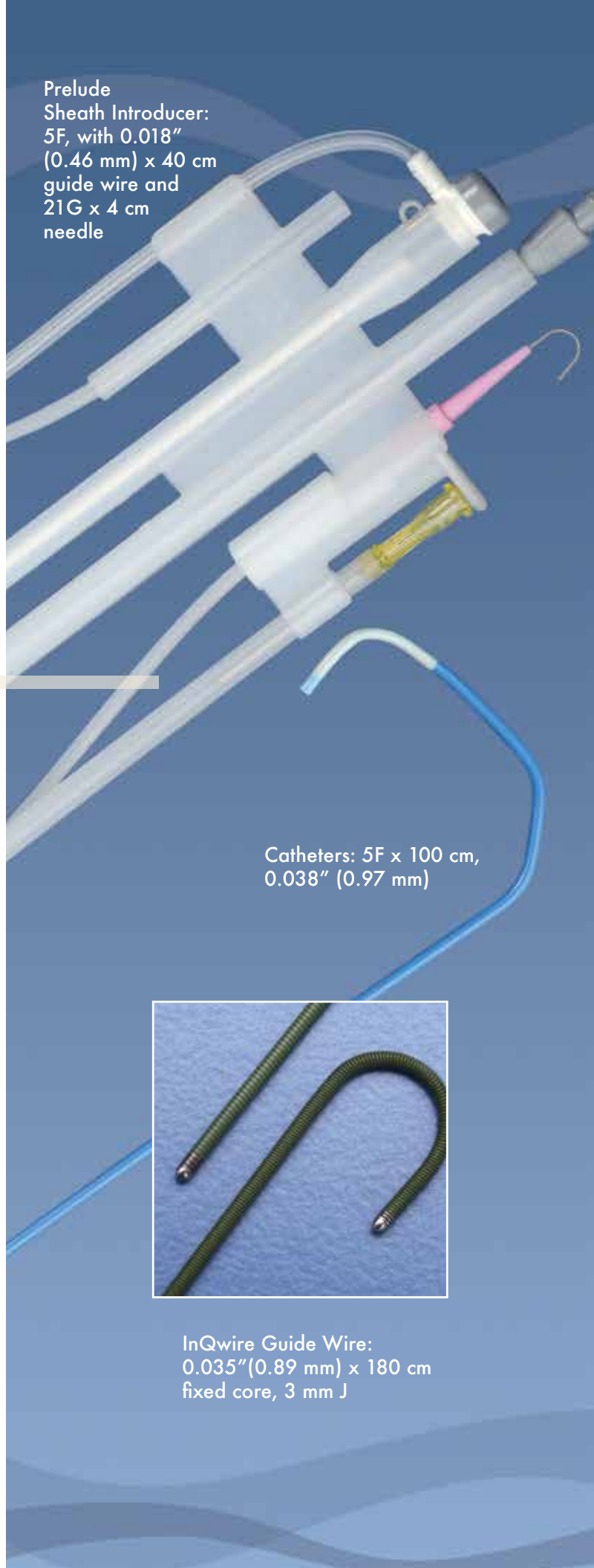
Other standard diagnostic cardiology catheters are available.

PACKAGING OPTIONS

*Save Time, Costs,
and Space*

When patient needs require rapid response, having all of your **radial products conveniently packaged together decreases procedure set up time**. The Radial MultiPACK plus™ allows you to order catheters, guide wires, and sheaths with a single catalog number saving cost, inventory, and space in your lab.

Prelude
Sheath Introducer:
5F, with 0.018"
(0.46 mm) x 40 cm
guide wire and
21G x 4 cm
needle



Catheters: 5F x 100 cm,
0.038" (0.97 mm)



InQwire Guide Wire:
0.035" (0.89 mm) x 180 cm
fixed core, 3 mm J

Radial MultiPACK plus™
Sheath, Guide Wire and Catheters

Catalog Number	Catheter Description	Side Holes	Sheath Length	Sheath GW Type
RADMPP-1	Ultimate 1	0	7cm	SS/SS
RADMPP-2	Ultimate 1	0	11cm	SS/SS
RADMPP-3	Ultimate 1	1	7cm	SS/SS
RADMPP-4	Ultimate 1	0	7cm	NT/PT
RADMPP-5	Ultimate 1	0	11cm	NT/PT
RADMPP-6	Ultimate 1	1	7cm	NT/PT
RADMPP-7	JL 3.5, JR 4.0	0	7cm	SS/SS
RADMPP-8	JL 3.5, JR 4.0	0	11cm	SS/SS
RADMPP-9	JL 3.5, JR 4.0	0	7cm	NT/PT
RADMPP-10	JL 3.5, JR 4.0	0	11cm	NT/PT
RADMPP-11	Ultimate 4T-40	0	7cm	NT/PT
RADMPP-12	Ultimate 4T-40	0	11cm	NT/PT

*Your radial
products
conveniently
packaged together.*

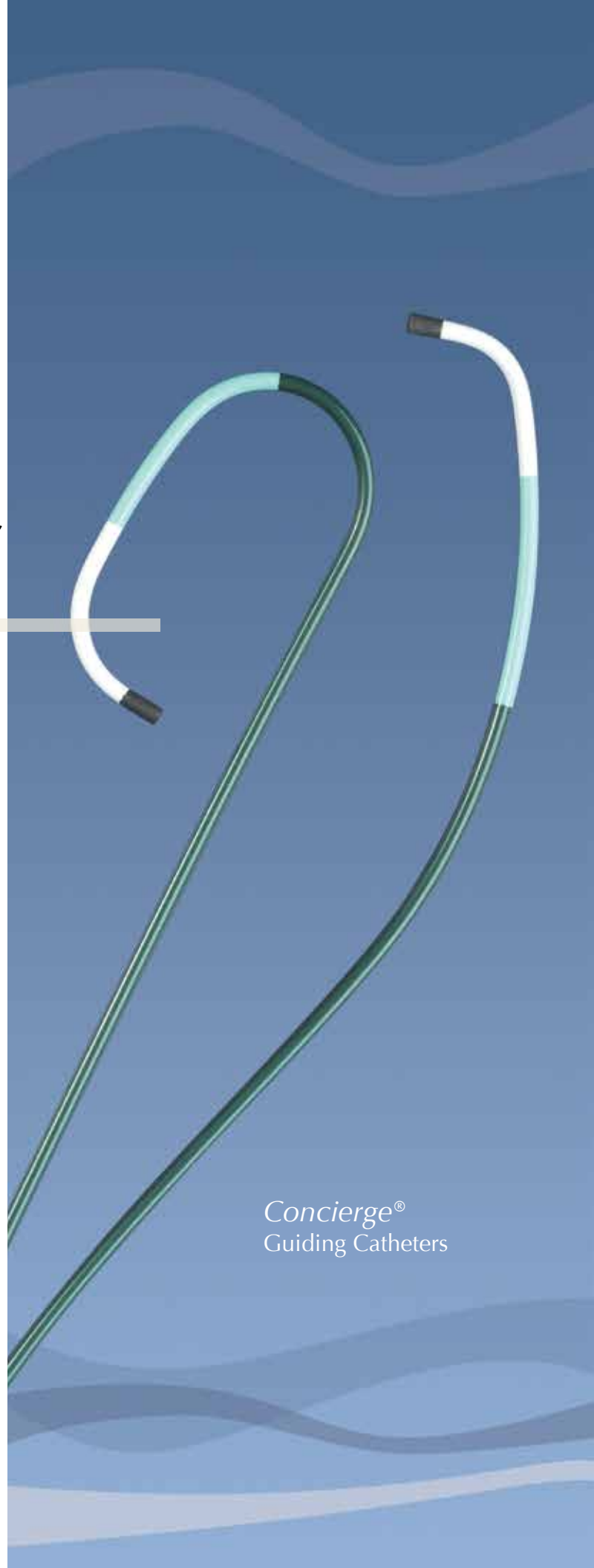


GUIDING CATHETERS

The Bar Has Been Raised

The Concierge® Guiding Catheter's advanced braiding technology **provides excellent backup support and torqueability to maintain vessel engagement during device advancement.** The soft, compliant catheter tip allows atraumatic ostial cannulation.

Merit Medical is a global company. Not all goods in this brochure are available in every country. Terms and conditions may vary. Contact your local sales representative for more details.

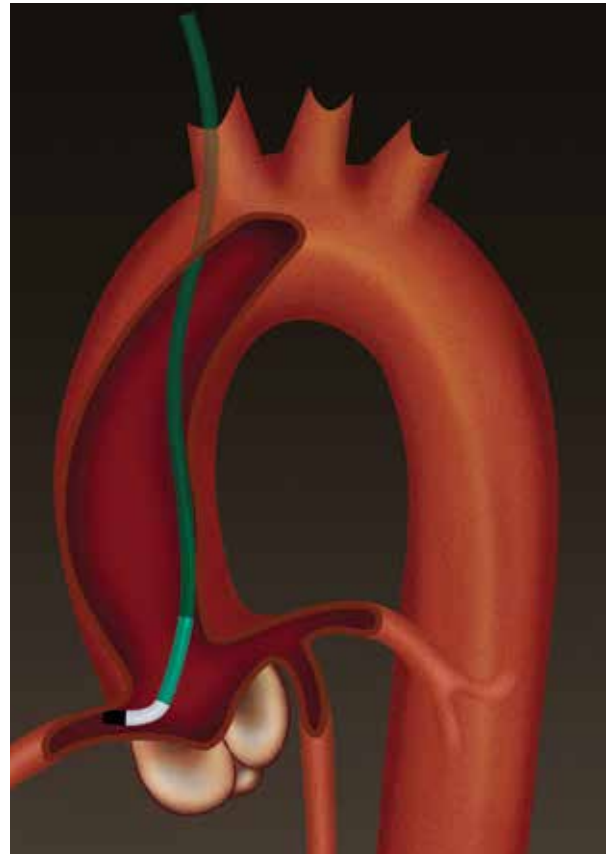


Concierge®
Guiding Catheters

Catalog Number	Description	French Size	Tip Shape
CGC5100JR30	Judkins Right	5F	3.0
CGC6100JR30	Judkins Right	6F	3.0
CGC5100JR35	Judkins Right	5F	3.5 *
CGC6100JR35	Judkins Right	6F	3.5 *
CGC5100JR40	Judkins Right	5F	4.0 *
CGC6100JR40	Judkins Right	6F	4.0 *
CGC5100JR50	Judkins Right	5F	5.0 *
CGC6100JR50	Judkins Right	6F	5.0 *
CGC5100JR60	Judkins Right	5F	6.0
CGC6100JR60	Judkins Right	6F	6.0

CGC5100JL30	Judkins Left	5F	3.0
CGC6100JL30	Judkins Left	6F	3.0
CGC5100JL35	Judkins Left	5F	3.5 *
CGC6100JL35	Judkins Left	6F	3.5 *

Catalog Number	Description	French Size	Tip Shape
CGC5100JL35ST	Judkins Left (ST)	5F	3.5
CGC6100JL35ST	Judkins Left (ST)	6F	3.5
CGC5100JL40	Judkins Left	5F	4.0 *
CGC6100JL40	Judkins Left	6F	4.0 *
CGC5100JL40ST	Judkins Left (ST)	5F	4.0
CGC6100JL40ST	Judkins Left (ST)	6F	4.0
CGC5100JL45	Judkins Left	5F	4.5
CGC6100JL45	Judkins Left	6F	4.5
CGC5100JL50	Judkins Left	5F	5.0
CGC6100JL50	Judkins Left	6F	5.0
CGC5100ULT1	Ultimate 1	5F	
CGC5100ULT2	Ultimate 2	5F	
CGC6100ULT1	Ultimate 1	6F	
CGC6100ULT2	Ultimate 2	6F	



Concierge guide catheters are designed with a higher level of guiding excellence.

*Also available with side holes

(ST) = Short Tip

Guide Catheter ID 5F 0.057" (1.4mm) 6F 0.070" (1.8mm)

HEMOSTASIS

Patent Hemostasis with Non-Occlusive Compression

The Finale®'s clear dial provides clinicians easy visualization of the radial access site, **improving post procedure patient monitoring**. Clinicians can achieve non-occlusive compression while maintaining adequate blood flow to the hand.

Catalog Number	Description
FCD100	Finale 10" (25.4 cm)
FCD200	Finale 12" (30.5 cm)
RADSRT	RADstat Short
RADSTD	RADstat Standard
SCV22P-AB	Clo-Sur PLUS P.A.D.



Finale®

*Compression at the
Turn of a Dial*



RADstat®

*Wrist Support and
Compression in a
Single Device*



Clo-Sur^{PLUS}P.A.D.™

*Hemostasis Plus
Antimicrobial Barrier*

ADDITIONAL RADIAL PRODUCTS

Merit Medical offers a comprehensive product line to help achieve the improved outcomes you expect from radial approach—**reduced complications, quicker ambulation, and increased patient comfort.**

Physicians can choose from a wide range of complementary products to customize their procedural pack needs.

Catalog Number	Description
K12T-04696	Radial Drape, 4 holes (Angle)
K12T-05047	Radial Drape, 4 holes (Standard)
PIB500	Pressure Infusor Bag™
AD21T21W	Merit Advance® Angiographic Needle 21G x 2.5 cm
AD21T41W	Merit Advance Angiographic Needle 21G x 4 cm
BT01	BowTie™ Guide Wire Insertion Device
CCS880	Inject8™ Coronary Control Syringe
CCX010	Inject10n™ Coronary Control Syringe
K01-60109	10 mL red "Nitro" Medallion® Syringe
K01-60082	10 mL blue "Heparin" Medallion Syringe
MBSP100	BackStop+™ 500 mL Disposal System with Temporary Sharps Holder
MMSP100	MiniStop+™ 100 mL Disposal System with Temporary Sharps Holder
SS10	ShortStop® Temporary Sharps Holder
SS20	ShortStop Advantage® Temporary Sharps Holder
MAP101	Passage® Hemostasis Valve
MAP111	Access-9™ Hemostasis Valve
MAP150	AccessPLUS™ Hemostasis Valve
MAP220	DoublePlay™ Hemostasis Valve
MAP300	Honor® Hemostasis Valve
MAP400	MBA™ Hemostasis Valve
MAP500	Torque Device
RXPOR	RXP® Flushing Syringe
IN4130	BasixCOMPAK™ Inflation Device
IN2130	Monarch® Inflation Device
IN7130	Blue Diamond™ Inflation Device
ASAP100	ASAP® Aspiration Catheter & Kit
3011	Ostial PRO® Stent Positioning System

*Blue Diamond™
Digital Inflation Device*



*Miser® Contrast
Management System*



*BowTie™
Guide Wire
Insertion Device*



*Medallion®
Syringe*



Hemostasis Valves



RADIAL APPROACHTM

IT'S TIME FOR OPTIONSTM

Visit www.merit.com/radial-approach for a complete list of products.



Merit Medical Systems, Inc. • 1600 West Merit Parkway • South Jordan, Utah 84095 • 1-801-253-1600 • 1-800-35-MERIT

www.merit.com

Merit Medical Europe, Middle East, and Africa (EMEA) • Amerikalaan 42, 6199 AE Maastricht-Airport • The Netherlands • Tel: +31 43 358 82 22

Merit Medical Ireland Ltd. • Parkmore Business Park West • Galway, Ireland • +353 (0) 91 703 733

Free phone for specific country: Austria 0800 295 374 • Belgium 0800 72 906 (Dutch) 0800 73 172 (French) • Denmark 80 88 00 24 • France 0800 91 60 30

Finland 0800 770 586 • Germany 0800 182 0871 • Ireland (Republic) 1800 553 163 • Italy 800 897 005 • Luxembourg 8002 25 22 • Netherlands 0800 022 81 84

Norway 800 11629 • Sweden 020 792 445 • UK 0800 973 115

402760001/B ID 021113