



The Point of Innovation

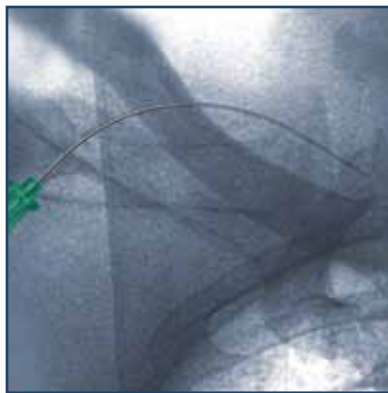
*Begins with Merit's Angiographic
Needles and ends with exceptional
clinical performance*

Merit Advance[®]
ANGIOGRAPHIC NEEDLES

ADVANCING NEEDLE DESIGNS WITH THE HIGH

Merit Advance™ angiographic needles combine an ergonomic hub, coated stainless steel and sharpness of the tip with top clinical performance. Our Majestik® 2 and 3 part needles offered in standard, Seldinger or Courmand shields incorporate a blunt cannula with a solid or hollow cutting stylet. When clinician safety matters, choose our SecureLoc® introducer needle.

C-shaped needle for clinicians who choose to place a tunneled dialysis catheter with a single stick.¹



¹Contractor SG, Phatak TD, Bhagat N. DeNovo Placement of a Tunneled Dialysis Catheter over a wire with the single-incision technique. J Vasc Interv Radiol 2008; 19:1255-1259.



HIGHEST STANDARDS YOU'VE COME TO EXPECT



Merit Advance[®]



Ergonomic hub with reference point to orient bevel. Smooth guide wire insertion and removal over the wire.

MAJESTIK[®]



Sharp grind angle facilitates entry into tissue and vessel wall. Blunt-end obturator occludes the cannula lumen.

 **SecureLoc**[®]



Easy-to-activate, low-profile safety mechanism shields the needle bevel after use for needlestick prevention.

ORDERING INFORMATION



CATALOG NUMBER	WALL GAUGE	WALL THICKNESS	ACCEPTS WIRE	LENGTH CM	LENGTH INCH	FINISH
ONE-WALL NEEDLE						
AD18T51W	18	Thin	.038" (0.97mm)	5.0	2"	Smooth
AD18T71W	18	Thin	.038" (0.97mm)	7.0	2¾"	Smooth
AD18T71W-E	18	Thin	.038" (0.97mm)	7.0	2¾"	Echo
AD18T71WT	18	Thin	.038" (0.97mm)	7.0	2¾"	Smooth
AD18N91W	18	Normal	.038" (0.97mm)	9.0	3½"	Smooth
AD19U41W	19	Ultra	.035" (0.89mm)	4.0	1½"	Smooth
AD19U51W	19	Ultra	.035" (0.89mm)	5.0	2"	Smooth
AD19U71W	19	Ultra	.035" (0.89mm)	7.0	2¾"	Smooth
AD20T41W	20	Thin	.025" (0.64mm)	4.0	1½"	Smooth
AD20T71W	20	Thin	.025" (0.64mm)	7.0	2¾"	Smooth
AD21T21W	21	Thin	.021" (0.53mm)	2.0	1"	Smooth
AD21T41W	21	Thin	.021" (0.53mm)	4.0	1½"	Smooth
AD21T41W-E	21	Thin	.021" (0.53mm)	4.0	1½"	Echo
AD21T71W	21	Thin	.021" (0.53mm)	7.0	2¾"	Smooth
AD21T71W-E	21	Thin	.021" (0.53mm)	7.0	2¾"	Echo
AD21T91W	21	Thin	.021" (0.53mm)	9.0	3½"	Smooth
AD21T91W-E	21	Thin	.021" (0.53mm)	9.0	3½"	Echo
ONE-WALL NEEDLE WITH SELDINGER SHIELD						
AD18T51WS	18	THIN	.038" (0.97mm)	5.0	2"	Smooth
AD18T71WS	18	THIN	.038" (0.97mm)	7.0	2¾"	Smooth
AD19U71WS	19	ULTRA	.035" (0.89mm)	7.0	2¾"	Smooth
ONE-WALL NEEDLE WITH COURNAIND SHIELD						
AD18T71WC	18	THIN	.038" (0.97mm)	7.0	2¾"	Smooth
AD19U41WC	19	ULTRA	.035" (0.89mm)	4.0	1½"	Smooth
AD19U71WC	19	ULTRA	.035" (0.89mm)	7.0	2¾"	Smooth
AD21T41WC	21	THIN	.021" (0.53mm)	4.0	1½"	Smooth
CURVED ONE-WALL NEEDLE						
AD21T91R*	21	THIN	.021" (0.53mm)	9.0	3½"	Smooth
AD21T91RE*	21	THIN	.021" (0.53mm)	9.0	3½"	Echo

*Packaged 10 per box, all other needles packaged 25 per box (4 boxes per case)



CATALOG NUMBER	WALL GAUGE	WINGS	ACCEPTS WIRE	LENGTH CM	LENGTH INCH
SECURELOC NEEDLE					
SL18T71W	18	w/o	0.038" (0.97mm)	7.0	2¾"
SL18T71WS	18	with	0.038" (0.97mm)	7.0	2¾"
SL21T71W	21	w/o	0.021" (0.53mm)	7.0	2¾"
SL21T71WS	21	with	0.021" (0.53mm)	7.0	2¾"

Packaged 25 per box (4 boxes per case)



Merit Medical Systems, Inc. • 1600 West Merit Parkway • South Jordan, Utah 84095 • 1-801-253-1600 • 1-800-35-MERIT www.merit.com
 Merit Medical EUROPE, MIDDLE EAST AND AFRICA (EMEA) • Amerikalaan 42, 6199 AE Maastricht-Airport • The Netherlands • Tel: +31 43 358 82 40
 Free phone for specific country:
 Austria 0800 295374 • Belgium 0800 729 06 (Dutch) 0800 731 72 (French) • Denmark 80 88 00 24 • France 0800 91 60 30 • Germany 0800 182 08 71
 Republic of Ireland 1800 553 163 • Luxembourg 8002 25 22 • Netherlands 0800 022 8184 • Sweden 020 79 24 45 • UK 0800 973 115 • Finland 00800 6374 8633

402314001/A ID 102411



CATALOG NUMBER	WALL GAUGE	WALL THICKNESS	ACCEPTS WIRE	LENGTH CM	LENGTH INCH	# OF PARTS
COURNAIND STYLE NEEDLE						
AN18T52C	18	Thin	.038" (0.97mm)	5.1	2"	2
AN18T53CO	18	Thin	.038" (0.97mm)	5.1	2"	3**
MODIFIED COURNAIND STYLE NEEDLE						
AN18T53MCO	18	Thin	.038" (0.97mm)	5.1	2"	3**
AN18T52MC	18	Thin	.038" (0.97mm)	5.1	2"	2
AN18T72MC	18	Thin	.038" (0.97mm)	7.0	2¾"	2
AN19U52MC	19	Ultra	.035" (0.89mm)	5.1	2"	2
SELDINGER STYLE NEEDLE						
AN18T73SO	18	Thin	.038" (0.97mm)	7.0	2¾"	3**
AN18T72S-25	18	Thin	.038" (0.97mm)	7.0	2¾"	2
AN19U72S-25	19	Ultra	.035" (0.89mm)	7.0	2¾"	2
SELDINGER NEEDLE WITH HOLLOW STYLET						
AN18T53SHO	18	Thin	.038" (0.97mm)	5.1	2"	3**
AN18T73SHO	18	Thin	.038" (0.97mm)	7.0	2¾"	3**
AN18T72SH	18	Thin	.038" (0.97mm)	7.0	2¾"	2
SELDINGER STYLE NEEDLE WITH COURNAIND SHIELD						
AN18T72SC	18	Thin	.038" (0.97mm)	7.0	2¾"	2

Packaged 25 per box (4 boxes per case)

** All 3-part needles include a blunt-end obturator by adding an "O" to the end of the catalog number

BENEFITS

Unique hub design with ergonomic feel and reference point to orient bevel.

Increased sharpness to facilitate entry into tissue and vessel walls.

Designed for smooth guide wire insertion and removal of the needle over the wire.