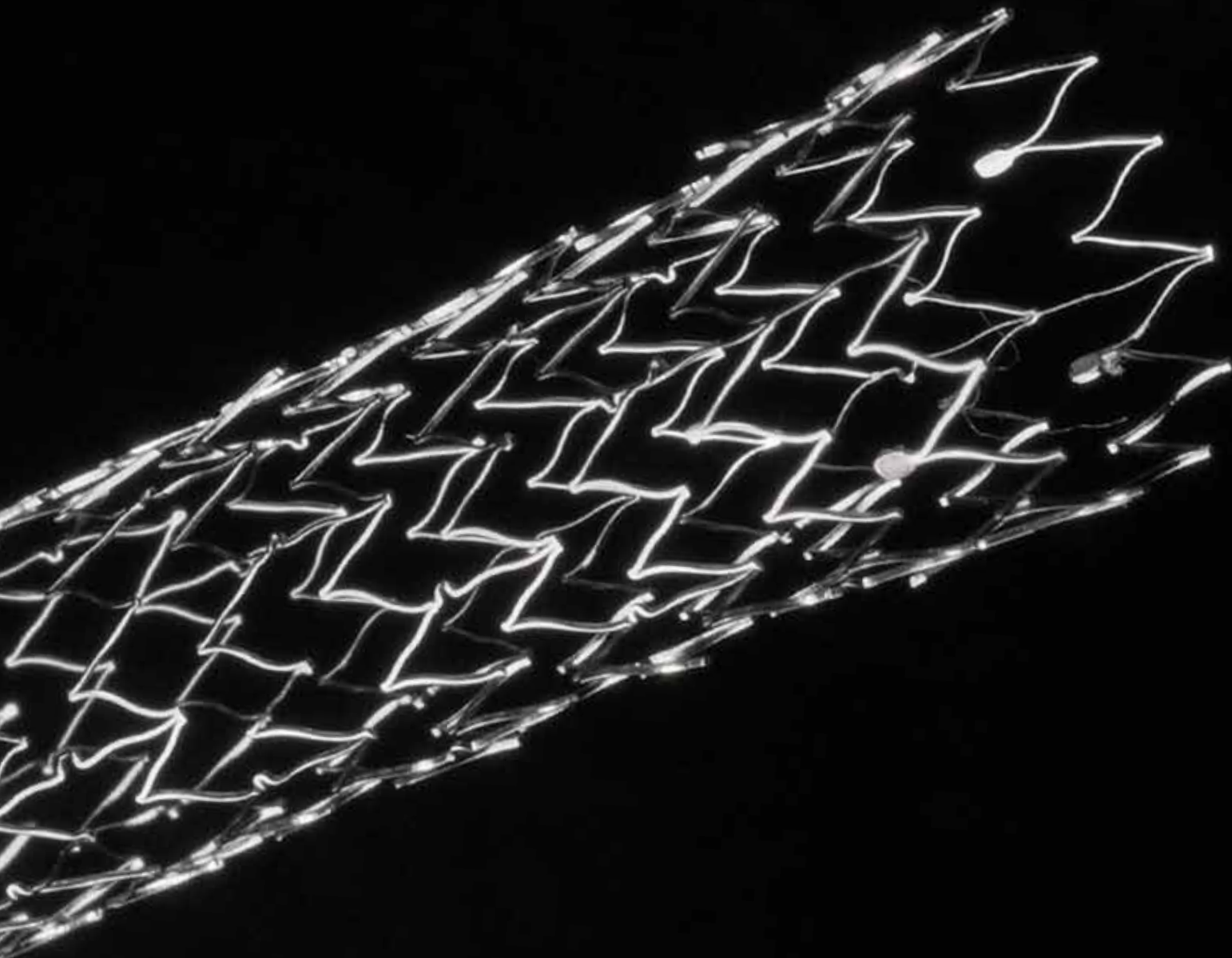


ALIMAXX-B[®]

Biliary Stent System



EXPANDING THE POSSIBILITIES

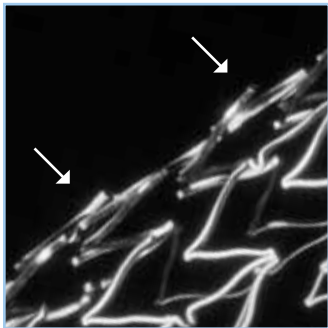


MERTMEDICA
ENDOTEK[®]

ALIMAXX-B[®]

BILIARY STENT SYSTEM

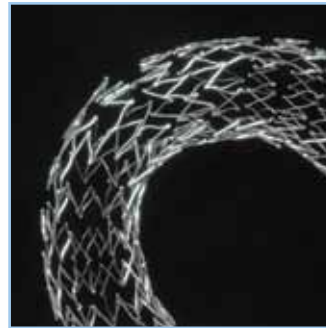
The uniquely designed metal stent, with its easy to use deployment system expands the possibilities in the treatment of malignant biliary strictures.



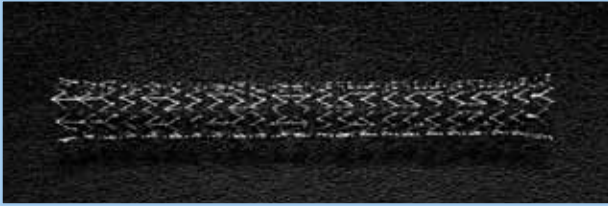
ANTI-MIGRATION STRUTS
Unique feature designed to reduce stent migration.



LASER CUT NITINOL CONSTRUCTION provides for virtually no foreshortening or elongation.



ANATOMY SPECIFIC
High conformability aids in stent placement of tortuous anatomy and maintains luminal patency.

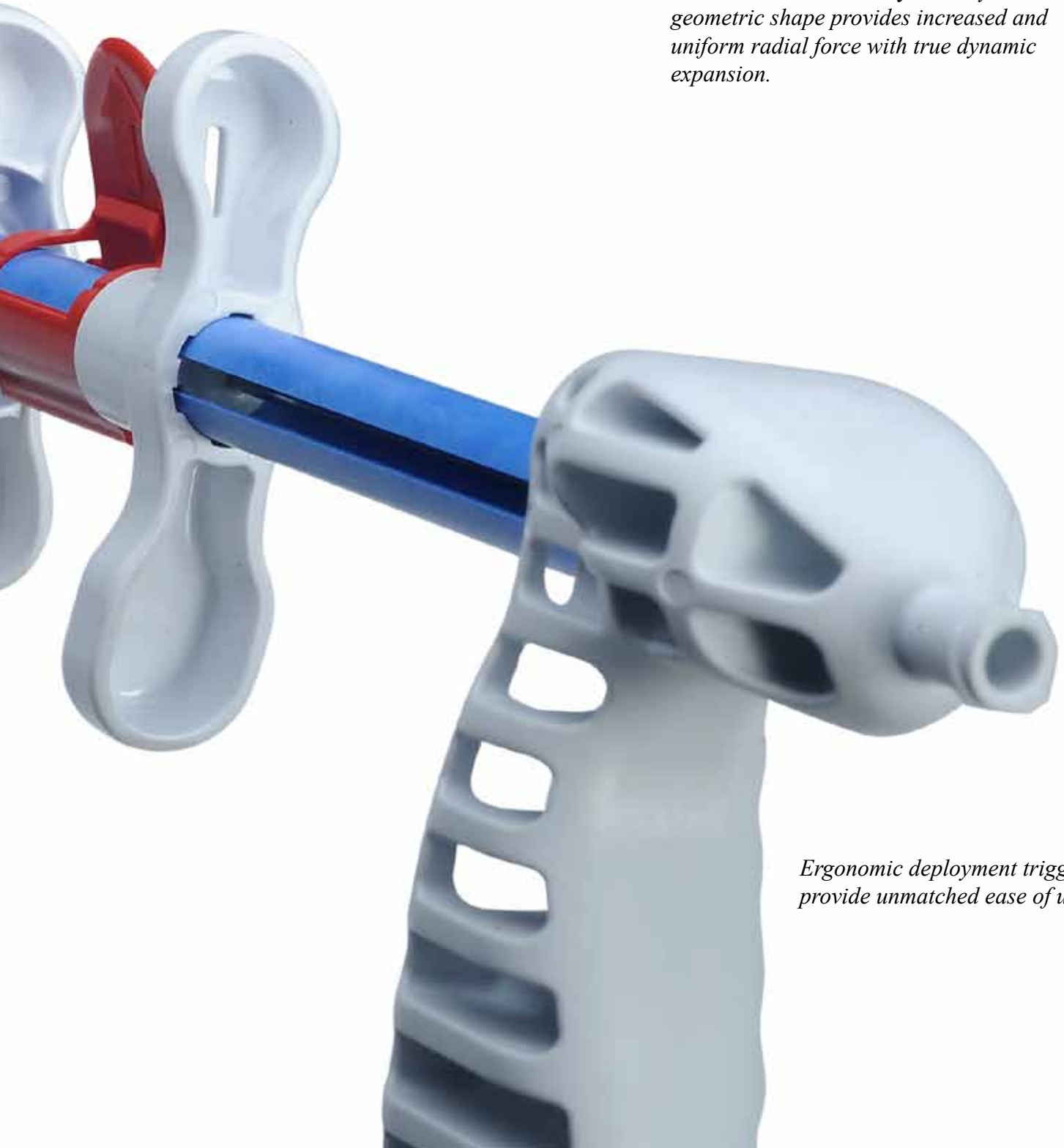


ANATOMY SPECIFIC GEOMETRIC SHAPE

The laser cut nitinol stent was designed to meet specific anatomical requirements of the biliary tree.

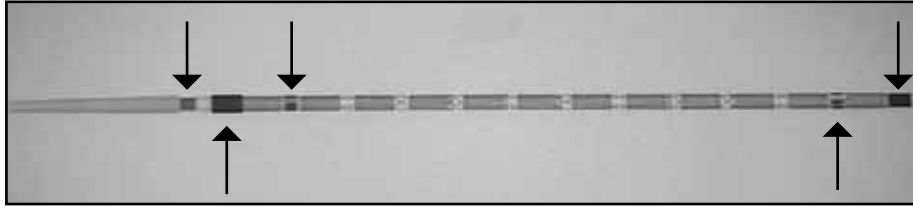
An open cell design allows for Y stenting at the hilar region.

The ALIMAXX-B Biliary Stent System's geometric shape provides increased and uniform radial force with true dynamic expansion.



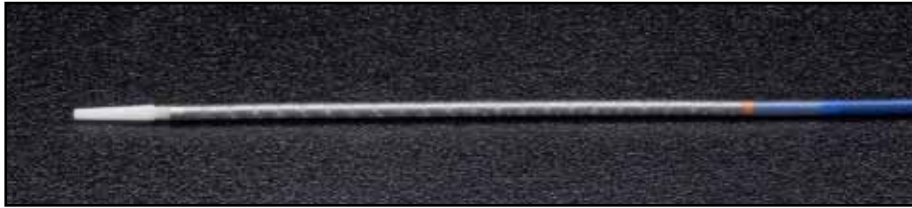
Ergonomic deployment triggers provide unmatched ease of use.

FLUOROSCOPIC VIEW



- 5 Radiopaque Markers
- One of two distal radiopaque markers moves with the outer sheath during deployment to help identify the progress of deployment.

ENDOSCOPIC VIEW



- Clear outer catheter allows increased visibility of proximal end of stent during deployment.
- Proximal end of stent is confirmed by orange endoscopic marker.

ALIMAXX-B Metal Biliary Stent

Catalog Number	Stent Diameter	Stent Length	Delivery System Length	Delivery System Diameter
70129-204	8mm	40mm	190cm	6.5F
70129-205	8mm	60mm	192cm	6.5F
70129-206	8mm	80mm	194cm	6.5F
70129-208	10mm	40mm	190cm	6.5F
70129-209	10mm	60mm	192cm	6.5F
70129-210	10mm	80mm	194cm	6.5F

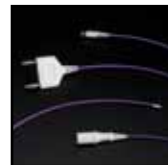
ALSO AVAILABLE



Fully Covered
ALIMAXX-ES™
Esophageal Stent



MAXXWIRE®
Guide Wire



Brighton® Bipolar
Probe



ENDOTEK BIG60®
Inflation Device



Merit Medical Systems, Inc. • 1600 West Merit Parkway • South Jordan, Utah 84095 • 1-801-253-1600 • 1-800-35-MERIT

endotek.merit.com

Merit Medical EUROPE, MIDDLE EAST AND AFRICA (EMEA) • Amerikalaan 42, 6199 AE Maastricht-Airport • The Netherlands • Tel: +31 43 358 82 40

Free phone for specific country:

Austria 0800 295374 • Belgium 0800 729 06 (Dutch) 0800 731 72 (French) • Denmark 80 88 00 24 • France 0800 91 60 30 • Germany 0800 182 08 71

Republic of Ireland 1800 553 163 • Luxembourg 8002 25 22 • Netherlands 0800 022 8184 • Sweden 020 79 24 45 • UK 0800 973 115 • Finland 00800 6374 8633

401991001/B ID 051012